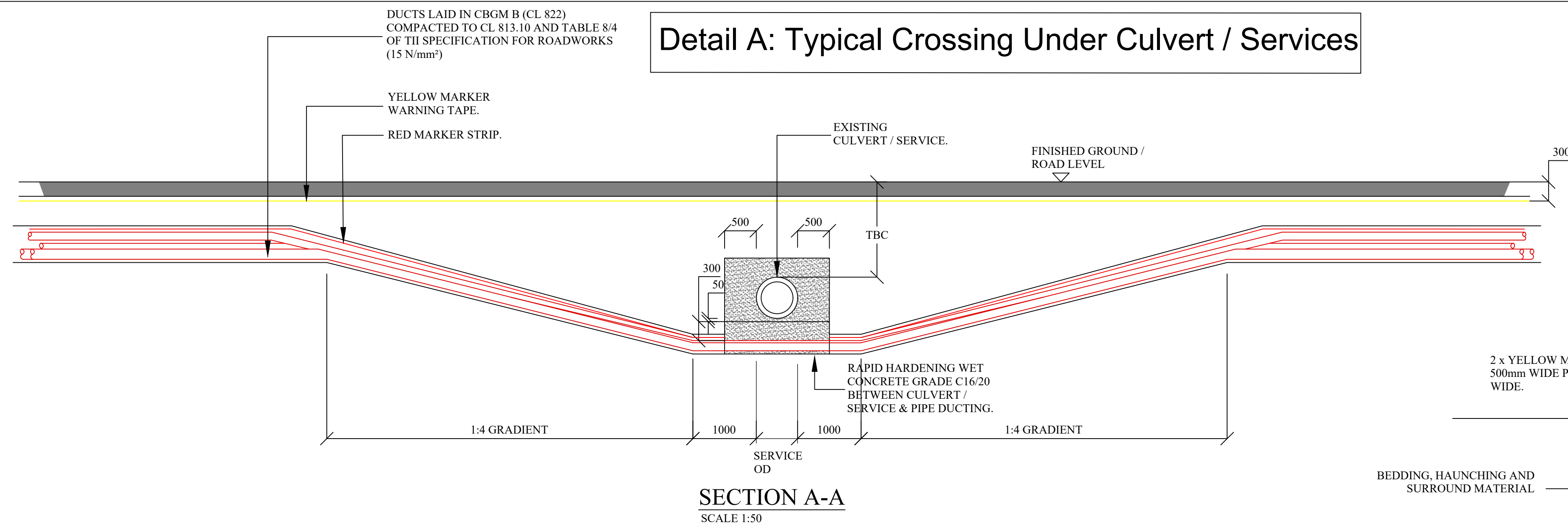
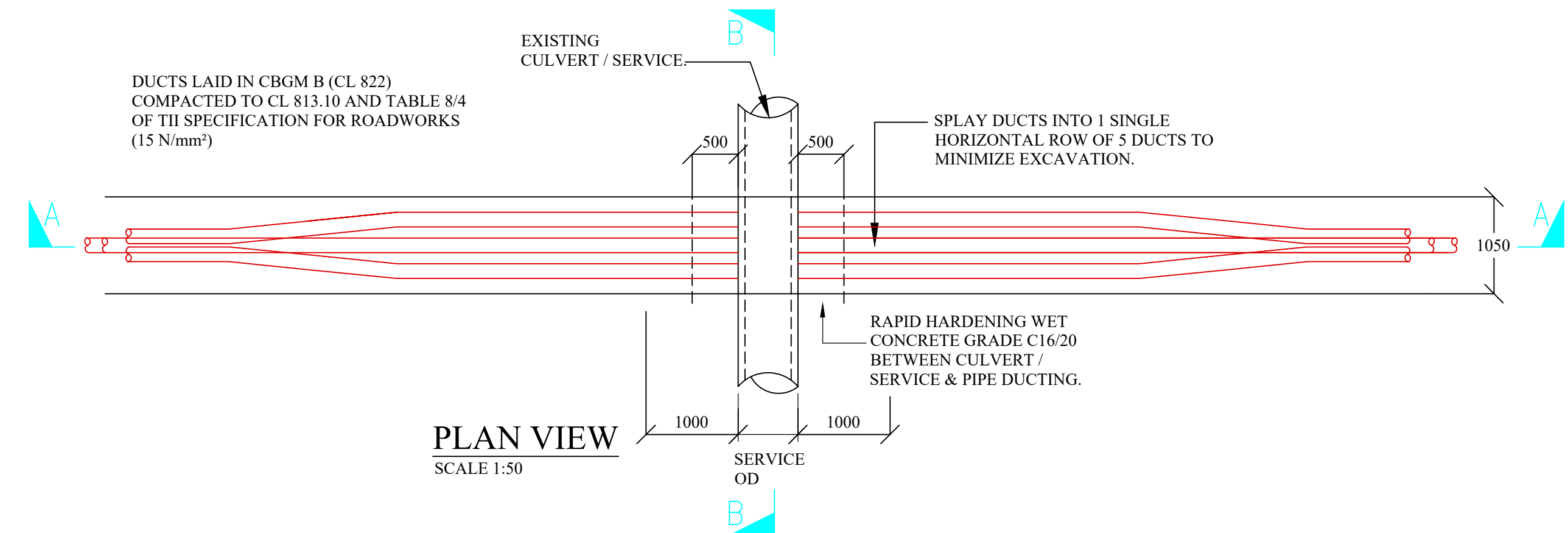


ISO A1 594mm x 841mm

Detail A: Typical Crossing Under Culvert / Services

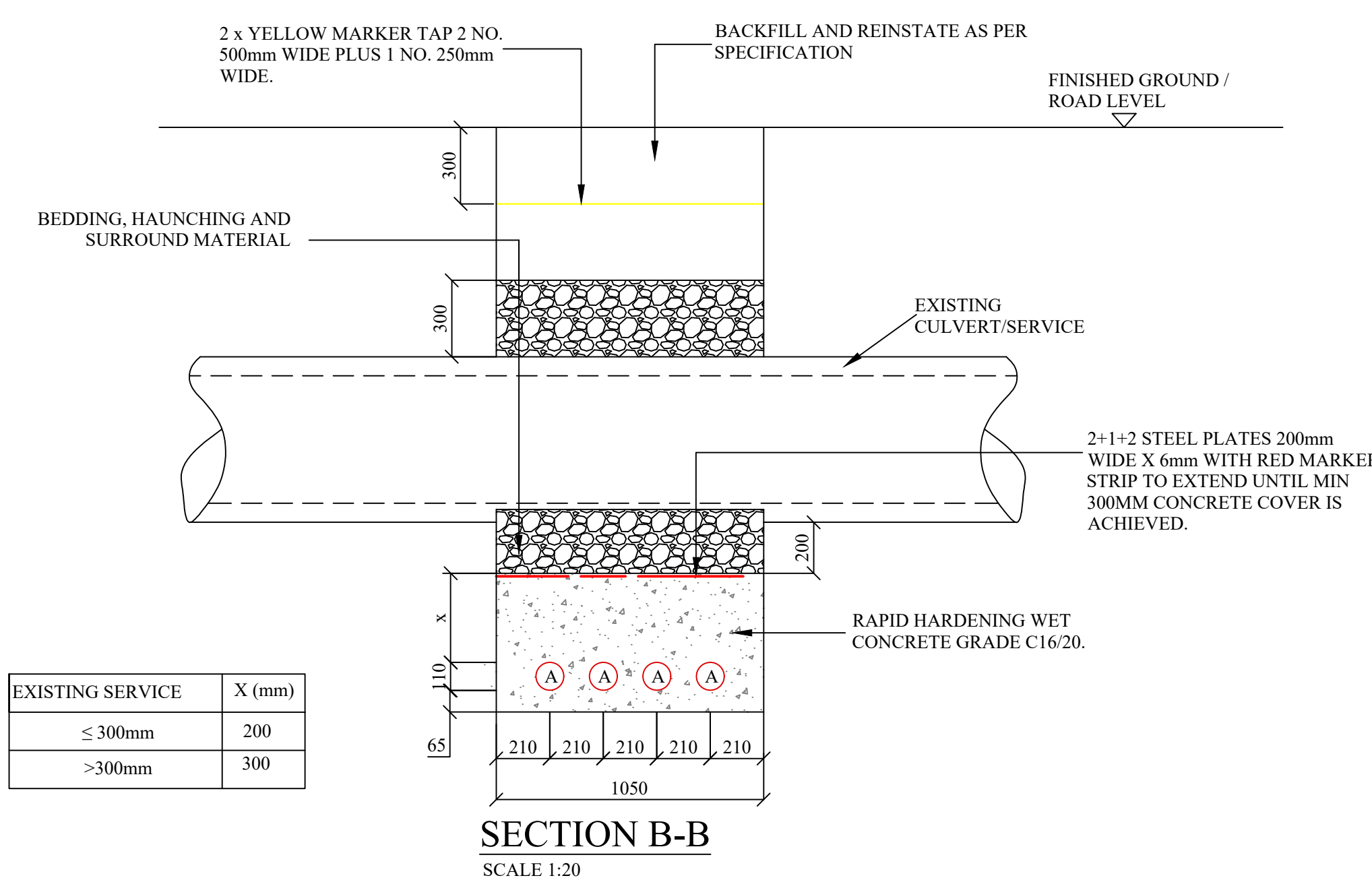


SECTION A-A
SCALE 1:50



PLAN VIEW
SCALE 1:50

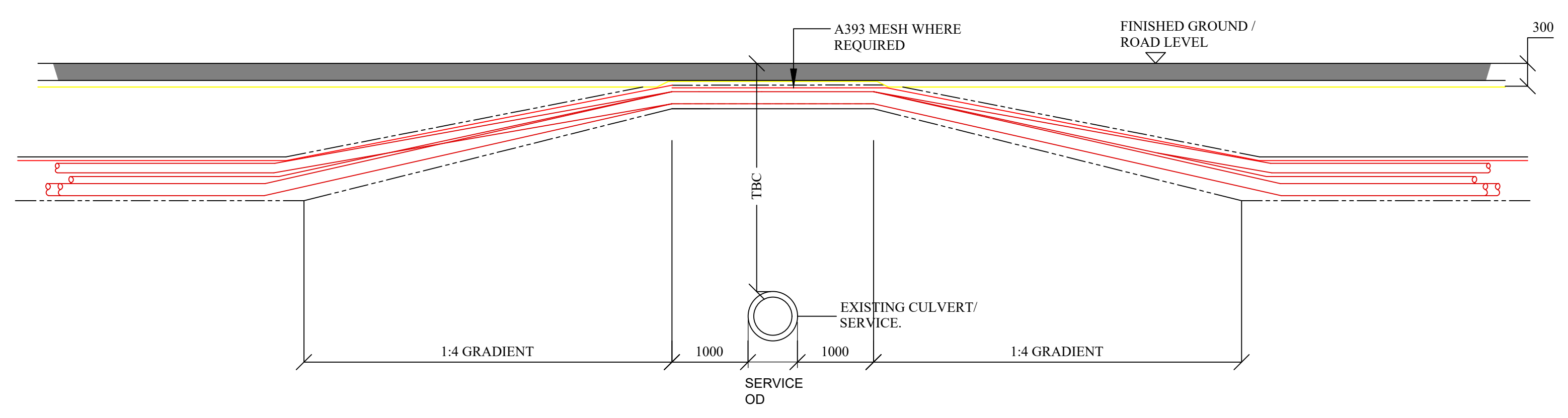
- NOTES:**
- This drawing is to be used only for the purpose of issue that it was issued and is subject to amendment.
 - This drawing is to be read in conjunction with all other relevant information.
 - Do not scale from this drawing, use figured dimensions only.
 - All dimensions are in millimetres, unless noted otherwise.
 - The actual position of individual services must be verified and established onsite before commencing the works. Specific utility crossing requirements to be incorporated into crossing design.
 - No excavation shall commence until the contractor has consulted up to date services drawings and carried out an electromagnetic locator (EML) scan.
 - Hand dig only within 500mm of existing services.
 - All offset dimensions to proposed cable route is to the centreline of the cable trench unless noted otherwise.
 - Backfill as per guidelines for the opening, backfilling and reinstatement of openings in the public roads.
 - As per WIS 4-08-02 & IGN 4-08-01 granular material shall be 14mm to 5mm garded aggregate or 10mm single sized aggregate.
 - If any service or culverts are damaged during construction they will be replaced in full. Camera scoping will be completed before and after the works.



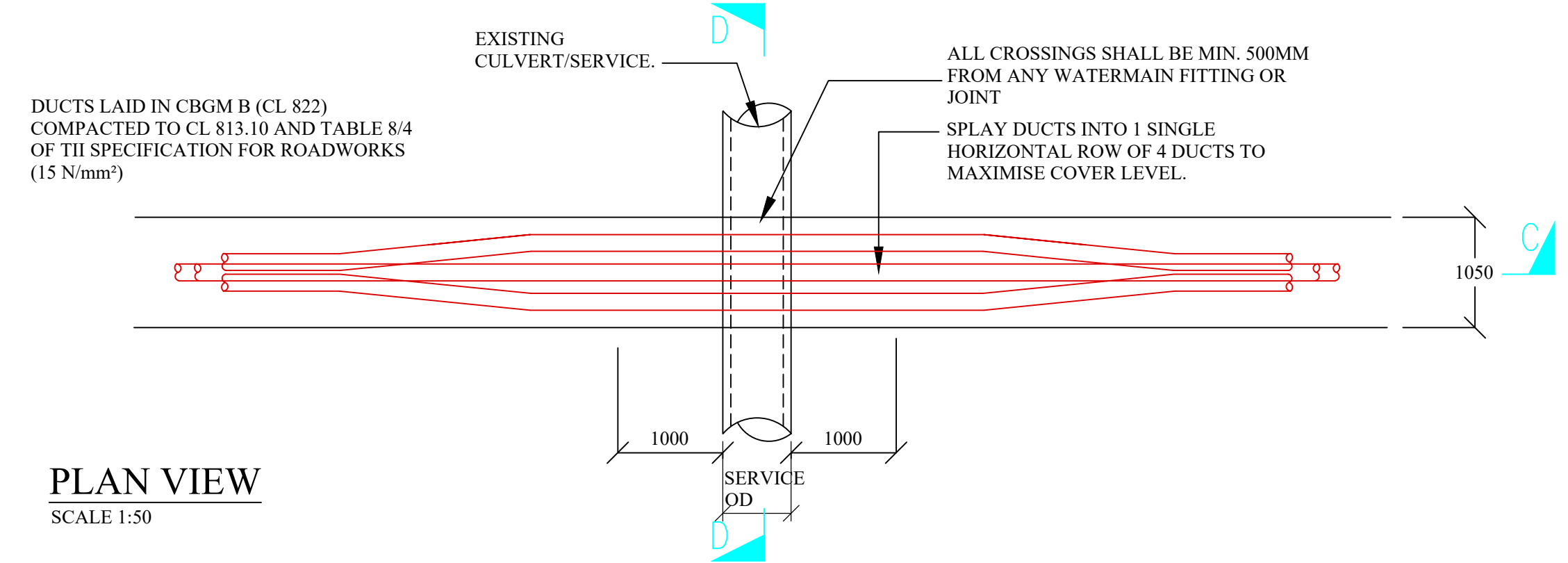
EXISTING SERVICE	X (mm)
≤ 300mm	200
>300mm	300

SECTION B-B
SCALE 1:20

Detail B: Typical Crossing Over Culvert / Services

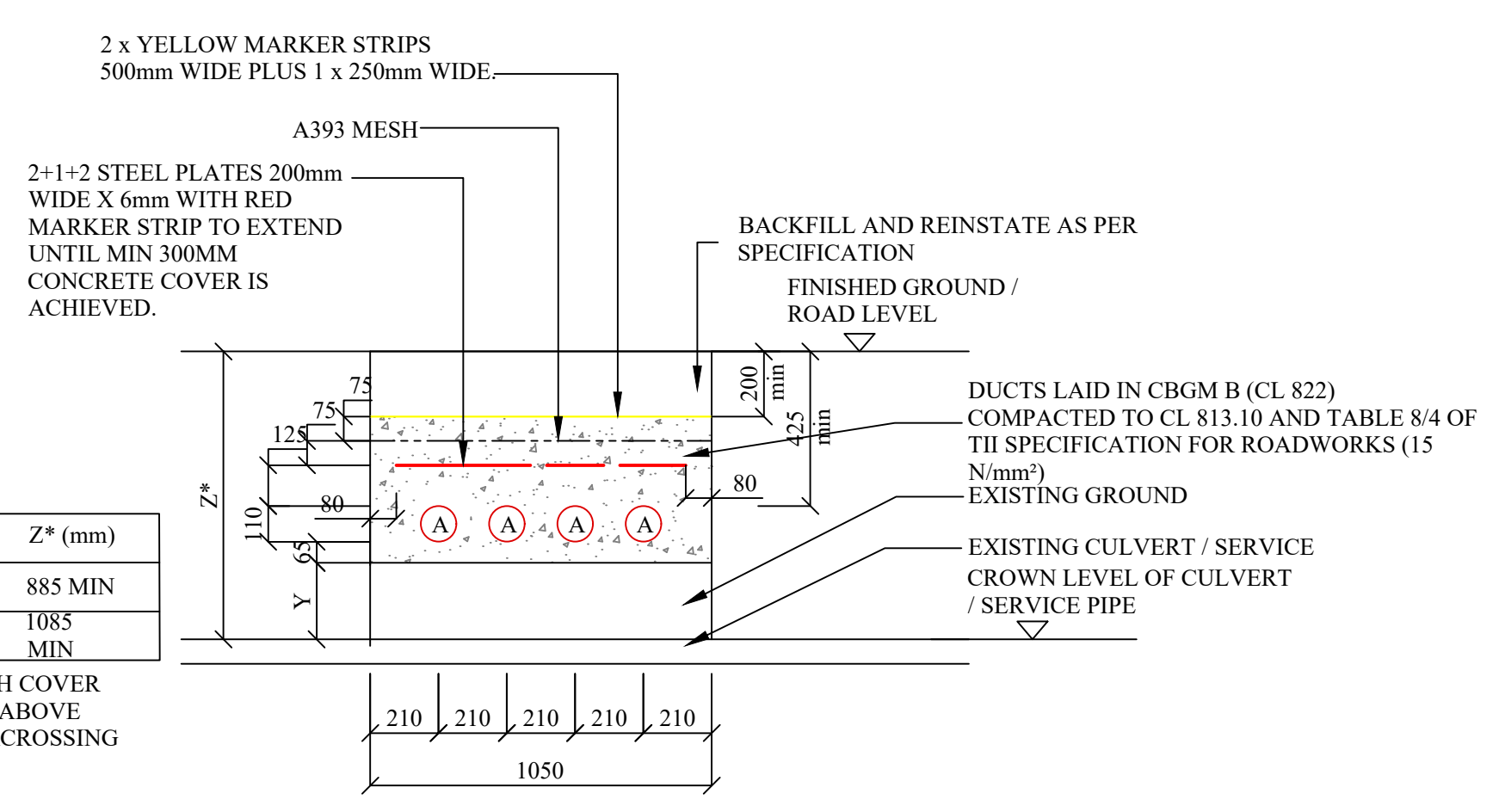


SECTION C-C
SCALE 1:50



PLAN VIEW
SCALE 1:50

Culvert Crossing Schedule					
Culvert No.	Pipe Ø(mm)	Material	Approx Cover (mm)	Crossing Over/Under	Notes
1.	1200	Concrete	4000	over	
2.	225	Plastic	750	under	
3.	1800	Concrete	4000	over	
4.	600	Concrete	1500	over	
5.	1000	Concrete	1800	over	
6.	300x2	Plastic	1400	over	



EXISTING SERVICE	Y (mm)	Z* (mm)
≤ 300mm	235	885 MIN
>300mm	435	1085 MIN

* ALL EXISTING SERVICES WITH COVER LESS THAN MIN. DIMENSIONS ABOVE SHALL BE CROSSED BY UNDERCROSSING METHOD

SECTION D-D
SCALE 1:20

Head Office
Beenleigh,
Abbeydorney,
Tralee, Co. Kerry
Ireland
Tel: 00353 66 7135710

Regional Office
Basepoint Business Centre
Stroudley Road, Basingstoke,
Hampshire,
RG24 8UP, UK
Tel: 00 44 1256406664

PROJECT
**Kilcock SHD
38kV Grid Connection**

APPLICANT
McGarrell Reilly Group

CONSULTANTS

NOTES: -

LEGEND: -

- 110mm Ø HDPE DUCT WITH 12mm DIAMETER PULL ROPE
- RED MARKER STRIP OR STEEL PLATES
- YELLOW MARKER WARNING TAPE
- = 110mm OUTER DIAMETER HDPE ESB APPROVED DUCT

ISSUE/REVISION		
NO	DATE	DESCRIPTION
P02	18.12.19	Issued For Information
P01	05.12.19	Issued For Information
I/R	DATE	DESCRIPTION

PROJECT NUMBER
05-731

SHEET TITLE
Typical Culvert / Service Crossing Details

SHEET NUMBER
TLI-05731-GC-DR-P-209